



23rd November 2012

European conference on Road Safety Data - Athens

Working together on Road Safety

By Manuelle Salathé, Head of ONISR
French National and Interministerial Observatory

SÉCURITÉ ROUTIÈRE
TOUS RESPONSABLES

What role does the Observatory play ?

Collecting data from various data sources :

- national accident database (police forces since 1960)
- data on offenders from justice and home office, professional risk, traffic_data, ...

Ordering :

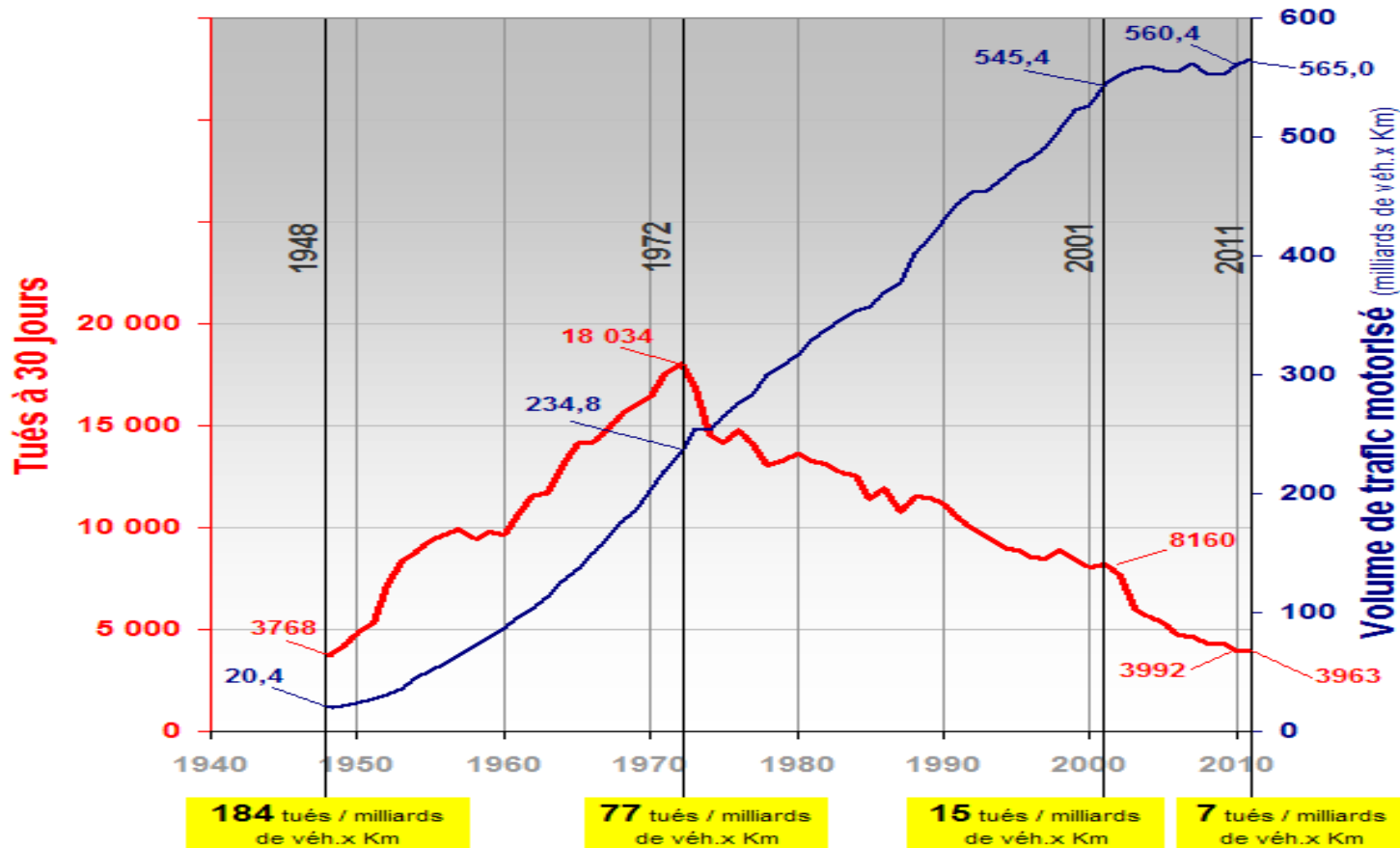
- research projects to fill knowledge gaps or to identify future possibilities, studies on sample population
- data analysis on the Rhône Register, especially on injured people

Managing a network of regional observatories



Key facts about Road Safety in France

MINISTÈRE
DE
L'INTÉRIEUR



SÉCURITÉ ROUTIÈRE
TOUS RESPONSABLES



Key facts about Road Safety in France

Evolution :

- number of killed per billion vehicle kilometer :

1972 : 77 - 2001 : 15 - 2011 : 7

- number of killed (within 30 days) :

1972 : 18 000 - 2001 : 8 000 - 2011 : 4 000

Key numbers :

- 1 000 bikers killed

- 1 000 14 - 24 years old killed

- 3 000 men and 1 000 women killed

SÉCURITÉ ROUTIÈRE
TOUS RESPONSABLES



What to expect from ERSO?

The ability to compare with other similar areas :

- identify areas for improvement and prove that it is still possible to get lower results
- share knowledge on key factors and methodologies to get to know people behaviour

The requirements :

- using similar type of data, collected through similar methods : focus on key data, easy to collect and update
- defining regions types



Region types in France

MINISTÈRE
DE
L'INTÉRIEUR

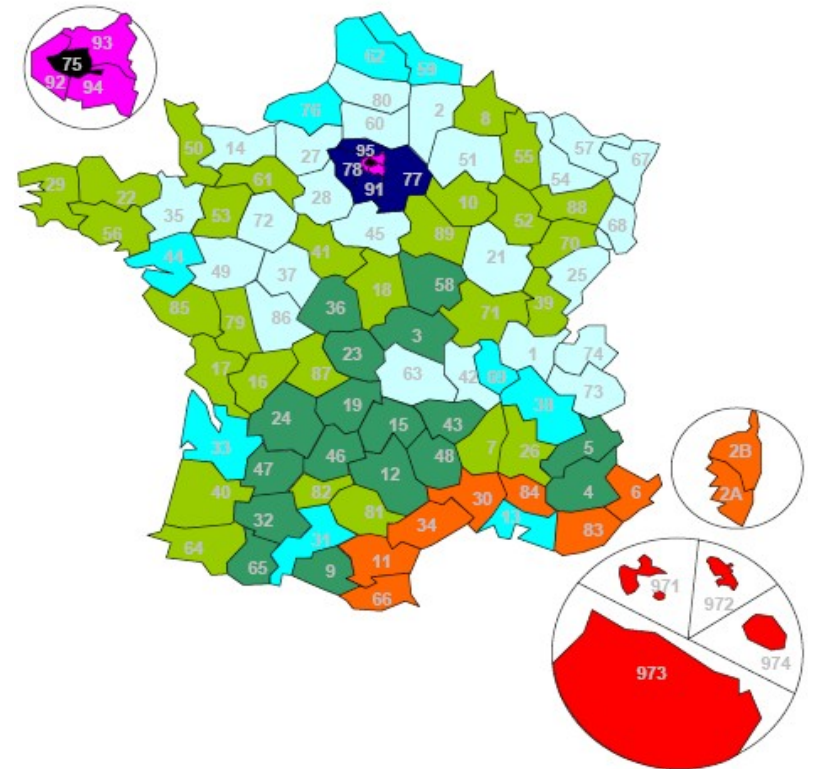
Les 9 familles de départements
selon leur profil de sécurité routière

Paris (black) and surrounding
area (purple/violet)

Major central city (blue)
Several small cities (light blue)

Rural area (vert foncé)
Areas in evolution (light green)

Mediterranean area (orange)
Oversea area (rouge)



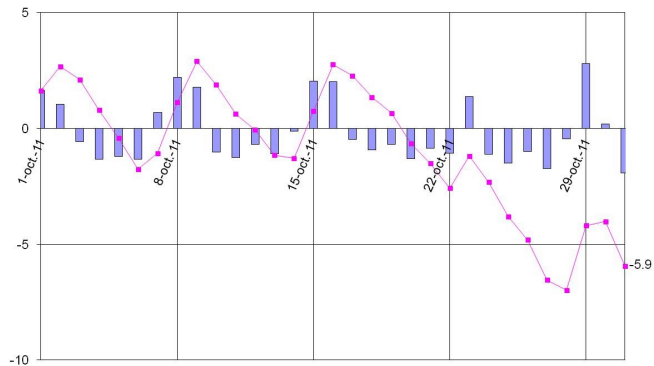
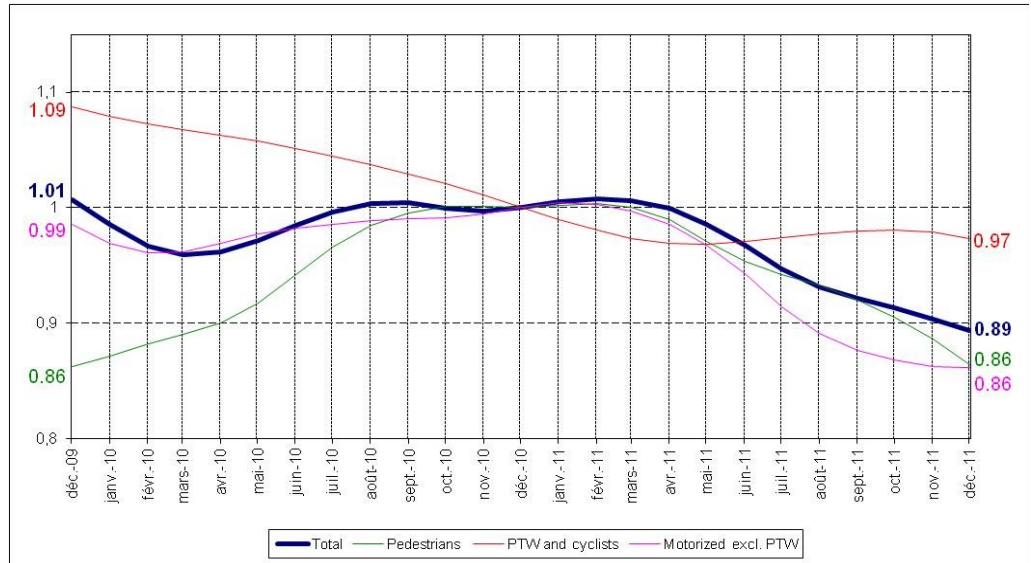
SÉCURITÉ ROUTIÈRE
TOUS RESPONSABLES



Finding the real fatality trend in France

Identifying the trend, the Giboulee model – previsions ?

Killed = Weather + Calendar + Season + TREND + Res.



See poster in common room

**SÉCURITÉ ROUTIÈRE
TOUS RESPONSABLES**

What future for ERSO?

Working with member states :

- defining validation procedures (who and how)
- meeting member states expectations : working on their priorities for evidence-based decision making, language
- approved joint methodologies, for instance for the data on seriously injured
- be realistic on what is achievable : type of data and ways to get them, cost/benefit analysis

Resources of ERSO : « Close the Project »

- « handover to Business As Usual »



Observatoire national interministériel de la sécurité routière - ONISR

THANKS FOR LISTENING

Manuelle Salathé, Head of ONISR

Website : type « ONISR » on any search engine

Email : onisr.dscr@developpement-durable.gouv.fr



SÉCURITÉ ROUTIÈRE
TOUS RESPONSABLES

MINISTÈRE
DE
L'INTÉRIEUR